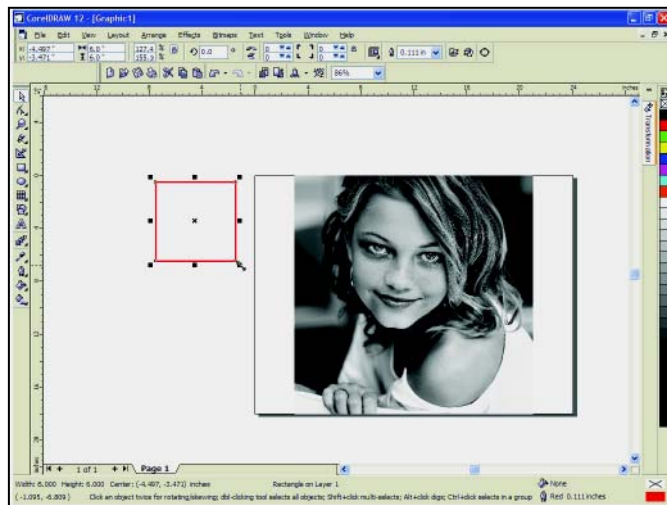


CREATING A MULTI-TILE LAYOUT PROJECT

Many times we have projects that are larger than our laser systems will accommodate. Here is a solution that will help you get the most out of your laser system. Using CorelDRAW™ software, you can break the original graphic into pieces small enough for the laser to work on one at a time. You then reassemble the pieces like tiles in a mural.

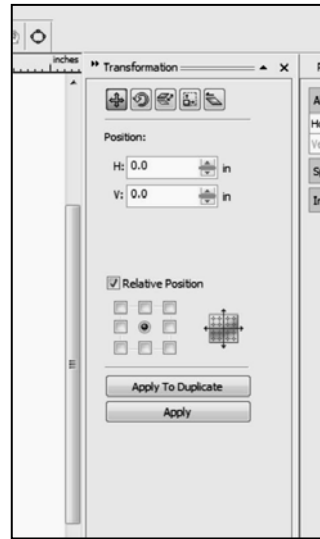
1. Change the page size of your document to match the exact size of the pieces when placed together. (Example: 18x24 using 12 6x6 tiles). The page size is located in the upper left in the properties bar. Using the pick tool (arrow), click on the blank page, and change the height and width of the page size to match the graphic you want to break up.
2. Double-click the Vertical Ruler and, in the Origin Selection, change the Vertical box to the height of your graphic (Example: 18" in 18x24).



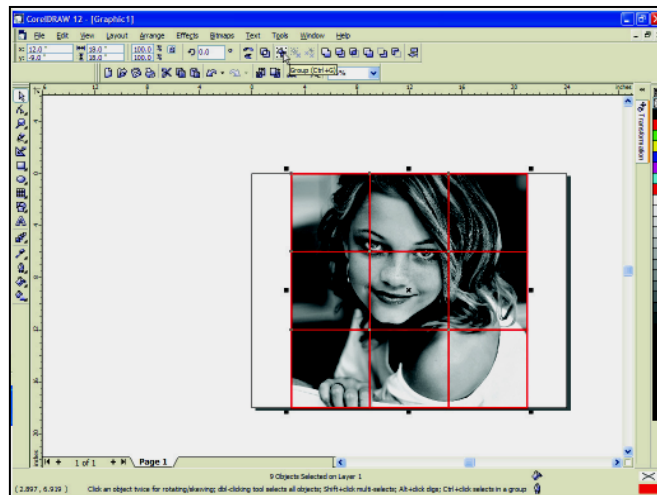
3. Import the image or design the graphic within that page at its full size.
4. Draw an outline box (red with no fill) that matches the dimensions of the pieces you're using to create the mural. (Example: 6x6 pieces for an 18x24 mural).
5. Using the Transformation Docker (Window>Dockers>Transformation>Position), click on the upper-left tick box of the grid, uncheck Relative Position, and change the H and V coordinates to 0,0. The outline box should have moved to the upper-left corner of the page.

CREATING A MULTI-TILE LAYOUT PROJECT (Cont'd)

6. Now check Relative Position in the Transformation Docker, and notice the X and Y values change to 0, 0. Change the H coordinate to match the exact width of you piece (Example: 6" for the 6x6 pieces). Click Apply to Duplicate until the page is filled across with outline boxes.



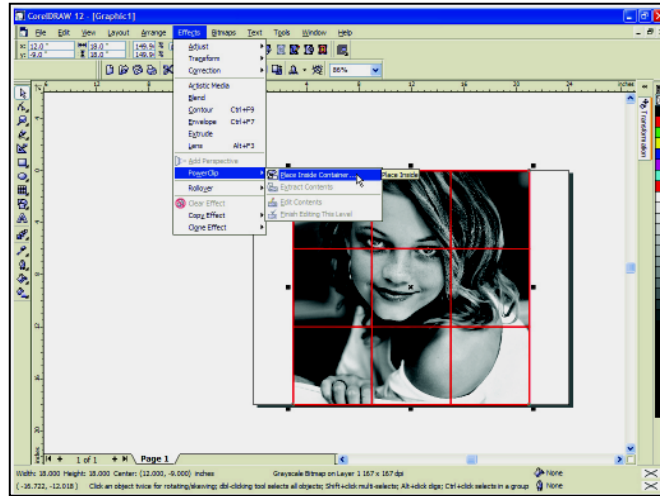
7. Now select all the outline boxes you just created, and again click Relative Position in the Transformation Docker. Change the V coordinate to match the exact height of the piece EXCEPT make this one negative (Example: -6" 6x6 pieces). Click Apply to Duplicate until the page is filled vertically with rows of outline boxes.
8. Select all the boxes that were just created and combine them by clicking on Arrange>Combine (Or use the keyboard command Alt-L).



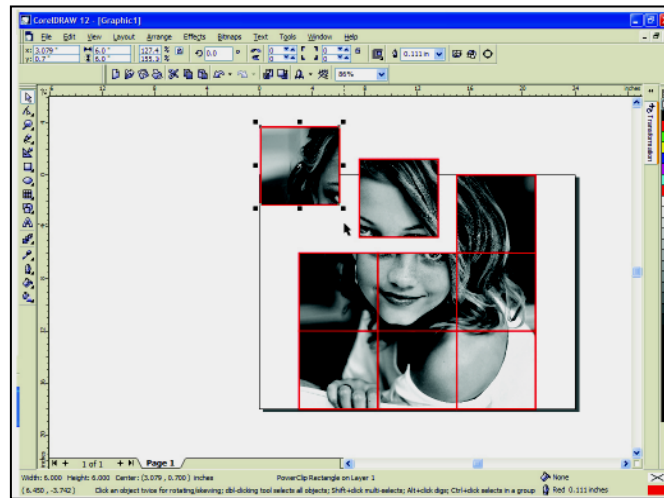
9. Take those boxes and move them off the side of the page.

CREATING A MULTI-TILE LAYOUT PROJECT (Cont'd)

10. With your graphic to be engraved selected, click Effects>PowerClip>Place inside Container. You will notice a black arrow appear. Click on the boxes you moved off to the side. Notice the graphic moves to the center of those boxes.



11. Now with the entire mural selected, strike the letter “P.” This will center the whole graphic on your page.
12. Break the mural apart by selecting it and then clicking Arrange>Break PowerClip Curve Apart. Now each piece is its own object.



13. To engrave the pieces, copy one object at a time by clicking Edit>Copy (or Ctrl-C) and Create a new page.
14. Double check that the new page you’ve created is the original page size, the one that matches the bed of your laser. If it is NOT, change the new page dimensions to match the dimensions of the laser bed.

CREATING A MULTI-TILE LAYOUT PROJECT (Cont'd)

15. Paste the object into the page using Edit>Paste (or Ctrl-P). NOTE: The object may not be within the page boundaries. If you do not see the object, zoom out until it is visible.
16. Center the object on your page. With the object selected, strike the letter "P." The object will center itself to the page.
17. Repeat steps 13-16 with each piece until your entire desired mural is complete.