



## TIPS & TRICKS

Another helpful idea that will simplify and improve your engraving and routing projects.

### ENGRAVELAB TIPS & TRICKS

**ENGRAVERS SOLUTIONS** recommends EngraveLab software to complete your projects quickly and easily, giving them the professional look your customers demand.

Below are some great solutions that will help make you a EngraveLab power user!

#### Table of Contents

- ➔ [Setting the Cutter Depth in the Software Using EngraveLab](#)
- ➔ [Changing Grid Size](#)
- ➔ [Multiple Jobs/Windows Open at the Same Time](#)
- ➔ [Routing Letters and Objects—Removing the Surface, Leaving the Letters Raised, or Filling a Nested or Inset Shape](#)
- ➔ [Welding Tools](#)
- ➔ [Locking, Choosing, or Controlling an Object's Usage – Engrave Some and Not Others](#)
- ➔ [Fill – Applying a Fill Pattern to Objects and Letters](#)
- ➔ [Drawing a Straight Line, a Triangle, or Other Polygon Freehand](#)
- ➔ [Saving Speed Settings in EngraveLab](#)
- ➔ [Displaying Cutter Width Graphically - Seeing What You Are Engraving](#)

#### Setting the Cutter Depth in the Software Using EngraveLab

To enter the cutting depth in the software:

- ➔ Select the item, words, etc. to be cut/engraved. The Edit Color Window opens up
- ➔ Double click on a color in the color pallet at the bottom of the screen
- ➔ Enter the depth in the window
- ➔ Click the CHANGE button and you are ready to go

**ENGRAVELAB TIPS & TRICKS (Cont.)**

**Changing Grid Size**

- Go to the OPTIONS menu
- Click on ENGRAVELAB SETUP
- Click on GENERAL PREFERENCES. You can change the grid size on this screen

**Multiple Jobs/Windows Open at the Same Time**

To have more than one EngraveLab window open at the same time, enable the Multiple Instance option under the OPTIONS menu. To help manage these windows, there will be two additional commands under the FILE menu: CLOSE and CLOSE ALL.

**Routing Letters and Objects – Removing the Surface, Leaving the Letters Raised, or Filling a Nested or Inset Shape**

Note that when placing one object within another, a “fill” operation will engrave the outer object and engrave over the inner object. The correct technique is to combine the two objects into a single path and then apply the FILL TOOL PATH operation. The following steps show how this is done:

- Assume that a logo must be placed within a star shape, where the star must be filled without losing the logo
- Create the text for the logo
- With the text selected, choose TEXT TO GRAPHICS from the ARRANGE menu. This will convert the logo into a graphic that can be routed
- Create a star shape that is large enough to contain the logo and then center the logo within the star
- Select both the star and the logo and then choose MAKE PATH from the ARRANGE menu. This will combine both objects a single object
- Apply a FILL TOOL PATH operation to the combined object. The result will be a filled star shape that correctly retains the logo that was placed within it

**Welding Tools**

The purpose of the Welding Tools is to delete overlapping vectors (lines).

**ENGRAVELAB TIPS & TRICKS (Cont.)**

For example, when using script fonts, the lines of the letters may overlap. By highlighting the text and clicking on the WELDING ICON you eliminate the overlapping lines. Another example would be two circles that overlap. You may eliminate the lines inside simply by clicking on the WELDING ICON. The icons give you examples of the different capabilities. Check it out.

**Locking, Choosing, or Controlling An Object's Usage – Engrave Some and Not Others**

If you have certain objects or words that you want to treat separately, this is the feature you have been looking for. For example, you have assigned different colors to a series of different objects or words, maybe four names and job titles in blue, a logo in red, and six names and titles in green. Instead of using the ENGRAVE BY COLOR feature, you can control what gets engraved, moved, etc. using one of the following two methods:

- Hold down the CONTROL key and click on the palette color you want to lock. All objects of that color are now locked
- Hold down the ALT key as you click on the color and you lock all other colors instead

**Fill – Applying a Fill Pattern to Objects and Letters**

Before you start the FILL procedure, click on the VIEW drop down menu at the top of your screen and make sure that the SHOW FILL command is NOT checked. If it is checked, click on it to deselect it.

- Click on the object you want to fill
- From the left hand menu of icons, select the second to last icon, the TOOL PATH TOOLS icon (it looks like a drill or cutter bit)
- From the fly out menu, select the second to last icon, which, if you roll your cursor over it, will say "FILL" (or "HOG" in older versions)
- In the new FILL dialog box that pops up, choose the following options:
  - Tool Window – Click on the drop down arrow to choose the size and type of cutter that you will use
  - Fill Style Window – Click on the drop down arrow to choose from six fill styles. Choose the one that is most appropriate for your application.

**ENGRAVELAB TIPS & TRICKS (Cont.)**

Practice which style of fill you like best based on the object and material you will engrave on. The reverse spiral is my favorite when burnishing or diamond dragging – it gives a cool 3-D effect

- Fill Overlap Window – Just below the Fill style Window is the Fill Overlap. The second box is the Overlap %, which is the percentage amount that each successive pass should overlap the previous pass. Overlap is used to ensure that all material is removed between contiguous passes of the tool. The overlap is expressed as a percentage of the tool diameter. In the second box, put in 10%
- ➔ Click OK. The window will close, and you will see your object filled. If you zoom in on your object, you can see the actual path which your cutter will take

**Drawing a Straight Line, a Triangle or Other Polygon Freehand**

- ➔ On the left hand tool bar, select the GRAPHICS EDIT TOOL Icon (it is a picture of a pencil)
- ➔ On the fly out toolbar, select the first icon, which is the NODE EDIT icon
- ➔ To draw a straight line, click on the work space where you want the line to start and end. To stop this function, click on the SELECT ARROW Icon at the top of the left tool bar. If you want your lines to be at 180 or 90 degree angles, hold down the CONTROL key as you click
- ➔ To draw a triangle or other polygon, just keep clicking where you want your corners or node points. To stop this function, click on the SELECT ARROW Icon at the top of the left tool bar

**Saving Speed Settings in EngraveLab**

- ➔ Double click on the color you would like to change the speed on in the Color Palette bar at the bottom of the screen
- ➔ Click on SPEED CONTROL and choose the XY and Z speeds you want
- ➔ Click CHANGE

**ENGRAVELAB TIPS & TRICKS (Cont.)**

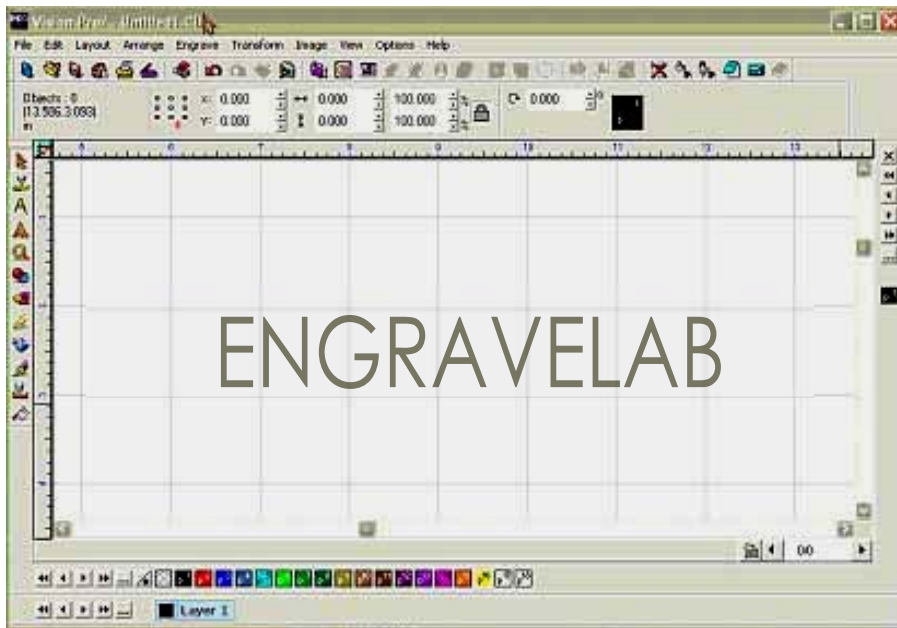
This does not change the speed for each job, only for each color. If you want to save the color palette with the different speeds:

- Right click to the right of the color palette
- Choose SAVE or SAVE AS to save the color palette
- Load the palette that you want to use

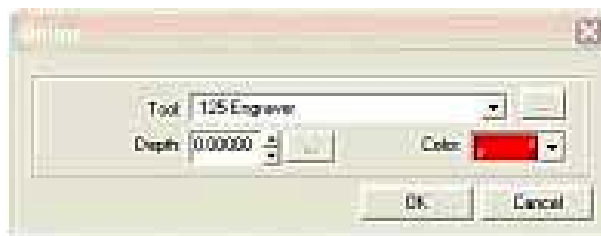
**Displaying Cutter Width Graphically - Seeing What You Are Engraving**

Often when using EngraveLab and engraving lettering on metal or plastic, picking the right size cutter can be an issue.

Below is an example of the text on an EngraveLab Job:

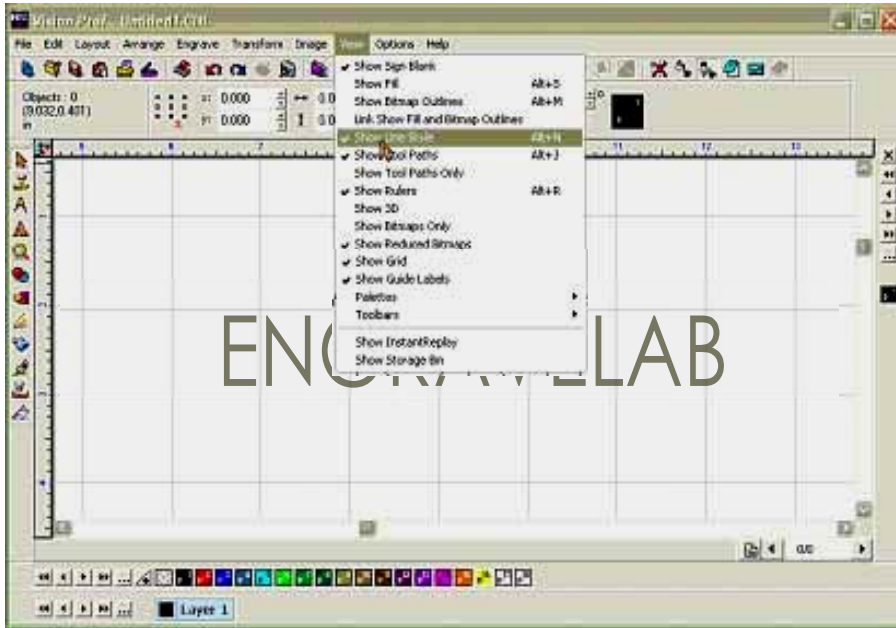


- Go to ENGRAVE > CREATE TOOL PATH > ONLINE. This dialog box will appear:

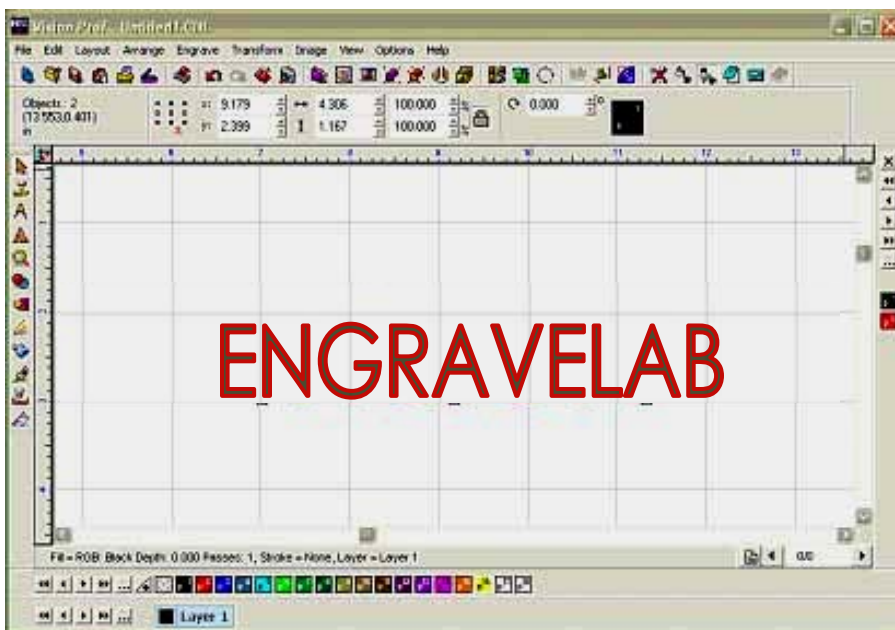


**ENGRAVELAB TIPS & TRICKS (Cont.)**

- Choose a tool from the drop down arrow box and click OK. For this example, I used a .125 cutter.
- Next go to the VIEW menu and click on SHOW LINE STYLE. This will put a check next to this menu item when it is turned on. The screen is shown below:



The results are shown below:



**ENGRAVELAB TIPS & TRICKS (Cont.)**

While the online is for engraving with depth without a nosecone, make sure your hit UNDO so your system won't try to engrave the depth. You might want to turn off the SHOW LINE STYLE. I normally use this when trying to show the results of the selected cutter when using the FILL option for filled objects.